

TRAWLER 58'

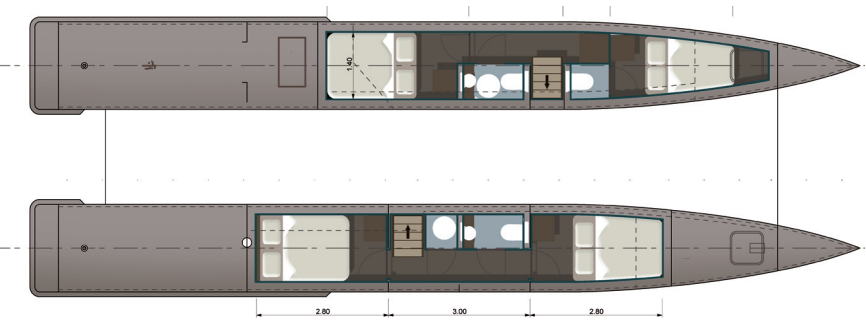
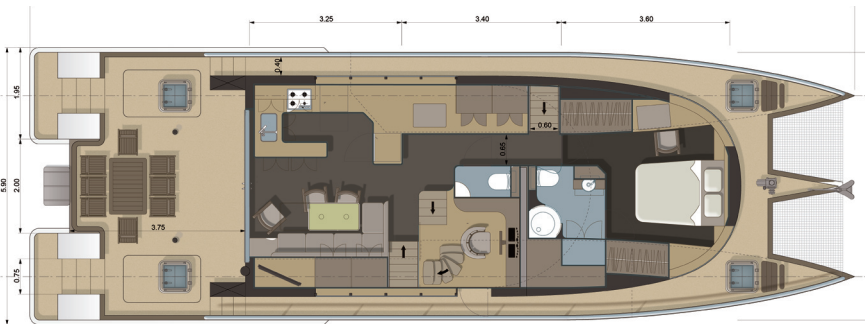
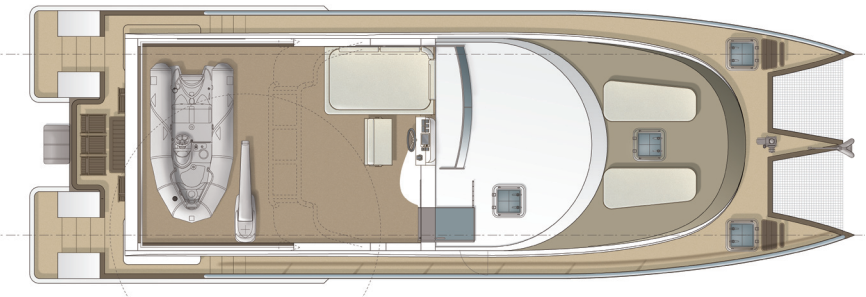
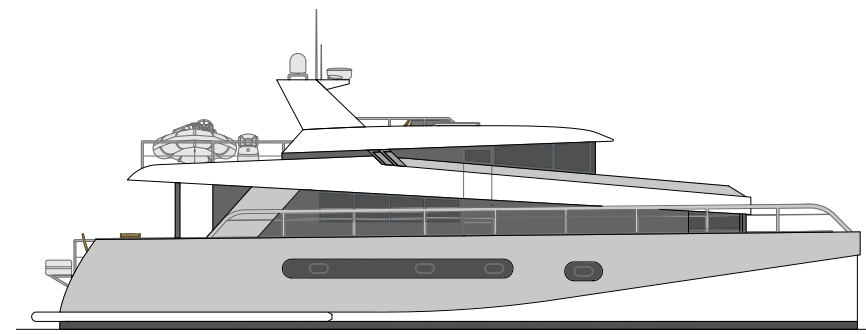
LOA :	57'9
Draft :	3'9"
Molded Beam :	18'8"
Overall Beam :	19'4"
Cruising speed :	17 knots
Maximum speed :	19 knots

Double cabins :	4
Crew cabin :	1

Outcome of a six months' study between Stirling Design International design office and Alu Marine shipyard, this 58' trawler catamaran has reached maturity.

In the eyes of the existing trawlers on the market, it is clear that the choice between large living spaces, speed performance, comfort, and availability of berths is a real problem for many owners. Many power catamarans just arrived on the market. But their impressive width, exceeding 8 meters, forced them to use their boat for charter use in the Caribbean or far from European coasts. Of course there are many monohull trawlers that can seduce by their speed performance, but these boats do not offer the same stability and the same space on board as this trawler 58.

Starting from a blank page, Stirling Design designed an elegant boat where outdoor lounge, saloon, galley and owner cabin are at the same level, providing optimal comfort. The internal wheelhouse, slightly raised, is located in "the heart of space", providing an important lighting to the entire saloon, and natural ventilation thanks to the large windows of the wheelhouse and the opening at side in the saloon.



OPTIMAL SIZE

With only 5.90 meters/19'4" wide, this catamaran can find a mooring place in most marinas and anchorages.

COMFORTABLE AND FUNCTIONAL LAYOUTS

This trawler offers, in addition to the owner cabin, three large double cabins in her hulls. In addition, a crew cabin is fitted to the front of the portside hull with a dedicated bathroom. The interior helmsman console gives a direct access to the flybridge with the tender on the aft part. The modern accommodation can be customized according to the customers' requests.

AN EFFICIENT AND STABLE BOAT

Equipped with two powerful Yanmar 6LY3 engines of 380 HP, complying with the latest environmental standards, her two hulls of 2.85 m / 9'3" wide at waterline can reach 19 knots in high comfort.

"A NON ORDINARY DESIGN"

Designed for a CE classification in B category, this modern trawler has benefited from the latest developments in design and engineering. Built in aluminum by the Alu Marine Shipyard, this new trawler yacht is the guarantee of durability and high quality.

Equipement	Marque	Caracteristique
Main Engines	Yanmar	6LY3 380 hp/3300 rpm
Generator Set	Onan	11 kW-50 Hz
Crane	Opacmare	250 kg to 3 meters
Tender	Zodiac	YL340 DL Capacity : 4 personnes 600 kg
Bow thruster	Vetus	140 kg of thrust 24 V - 5,7 kW

Public Relations



Thibaut Tincelin
Managing Director
STIRLING DESIGN INTERNATIONAL
Phone : +33 (0) 2 40 95 79 45
Fax: +33 (0) 2 40 95 79 46
Email address : tincelin@stirlingdesign.fr
Web site : www.stirlingdesign.fr



Elodie Verdan
Marketing and Communication Representative
ALU MARINE
Phone : +33 (0) 2 40 65 34 06
Fax : +33 (0) 2 40 65 16 52
Email address : everdand@alumarine.fr
Web site : www.alumarine-shipyard.com

